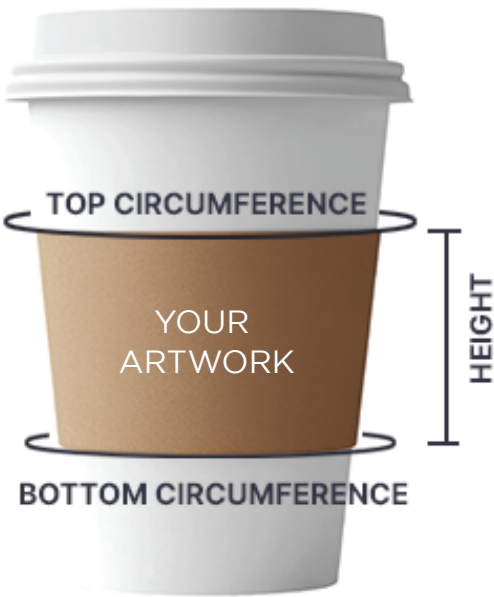


Artwork setup guide

(Tapered Label).

3D view



2D View: Flat Label (outside)



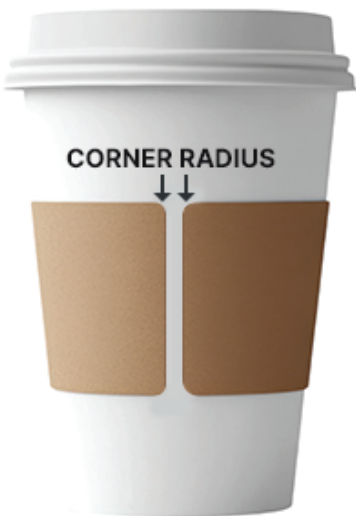
Descriptive view



Label wrapped on cup
(Front view)

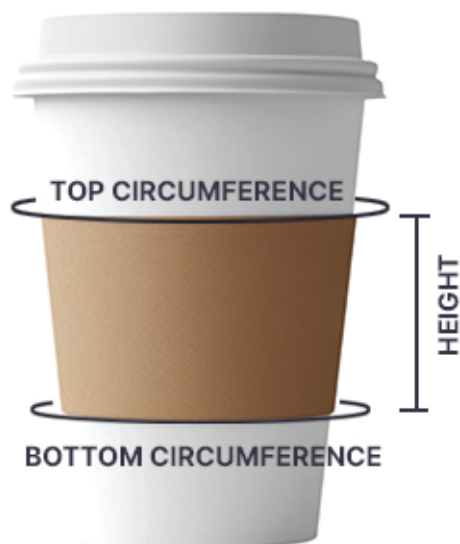


Wrap coverage 80%
(Back view)



Corner radius
(Back view)

1. Measure your cup's **top circumference**, **bottom circumference**, **height**, **wrap coverage** and **corner radius** and enter the data while you place order. A custom template ([see below](#)) file will be created based on the Product Dimensions you will enter when placing the order. This file will be sent by email. Refer to the 3D, 2D and Descriptive views ([page 1](#)) to get a better understand of the template file. You have to design your label based on that template.



Top Circumference: min= 2" and max= 12"

(Measure around the cup/container where the top of the label to be.)

Bottom Circumference: min=2" and max=12"

(Measure around the cup/container where the bottom of the label to be.)

Height: min=2" and max=12"

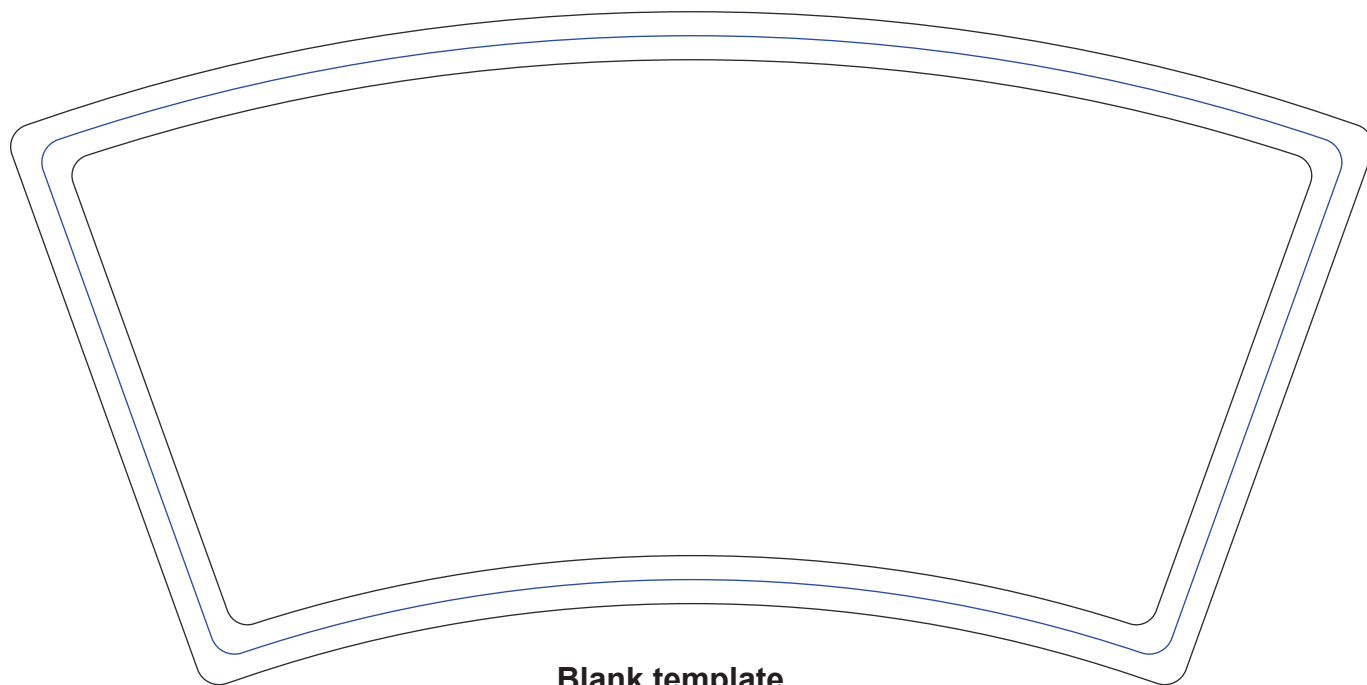
(Measure the distance between the top circumference and the bottom circumference.)

Wrap coverage: min=80% and max=120%

(How far the label wraps around the cup/container. For example, 80% coverage means the label wraps around about 80% of the total circumference of that tapered container. 100% coverage means full 360° wrap and 120% means to have your label overlap.)

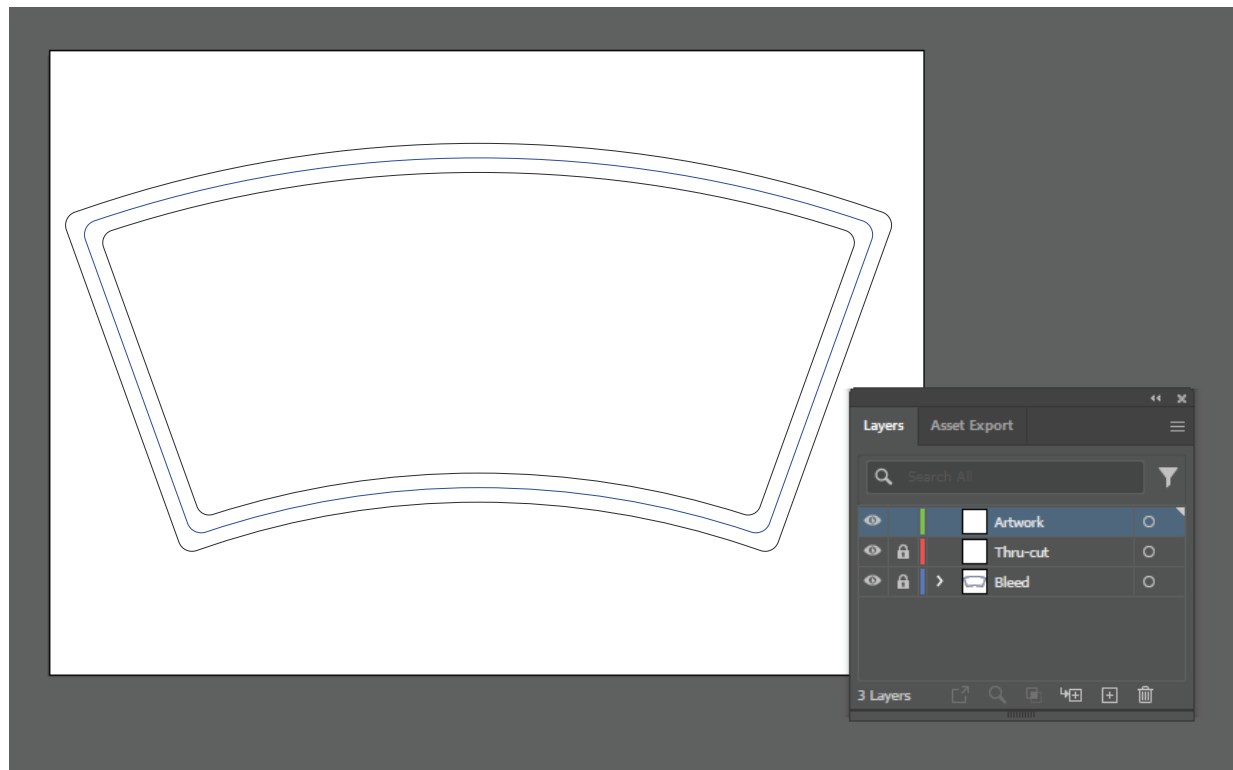
Corner radius: min=0.125" and max=0.5"

(The corner radius of a tapered label refers to how rounded the corners of the label are.)



Blank template

2. It is very important that you use Adobe Illustrator to open the template file and work on the artwork.

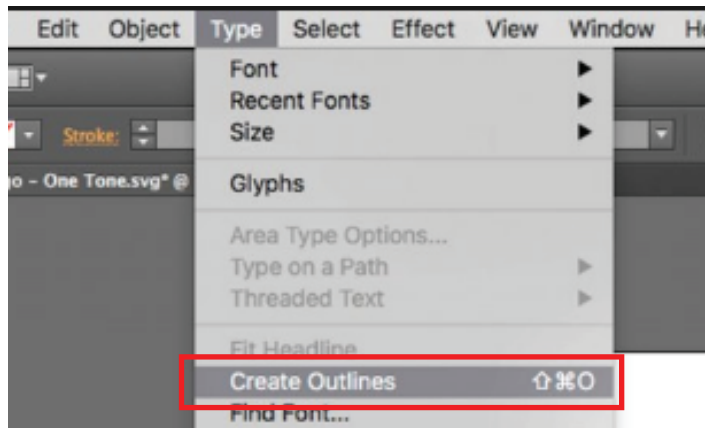


3. Your Template file will contain the following layers . **Use Only the Artwork Layer** to setup your artwork. **Do not delete any layer.**

IMPORTANT: Take a print of your label and place it on the cup to check the size and everything is good.



4. Make sure to outline all the fonts before sending the final artwork.



5. Once you are done save as PDF and choose Press Quality settings and upload it here http://www.printpapa.com/eshop/pc/upload_files_options.asp

